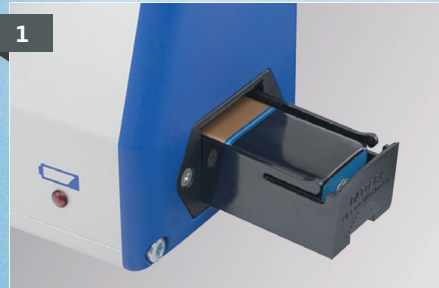


EASYSpray Preparation Instructions

Instructions for Circulating Nurse | EasySpray Pressure Regulator



Ensure 9V battery is installed into the EASYSpray pressure regulator. **Do not use rechargeable batteries.**



Connect EASYSpray device to IV pole or cart rail using the clamps on the back of the device. Ensure 9V battery is installed into the EASYSpray pressure regulator.



Attach connection tube from side of the EASYSpray Regulator to a propellant gas source (ranging from 3.5-7 bar / 50-100 psi). Use compressed medical air or nitrogen only, do not connect to an oxygen source.



After the spray set filters have been passed from the scrub nurse, connect to EASYSpray Regulator. Connect the clear filter to the clear luer connector and the blue filter to the blue luer connector.



Turn the on/off switch on the front side of the EASYSpray to the ON position. The low-battery indicator light will only illuminate when the battery is weak and the gas flow is activated at the same time.



Check the gauge on the EASYSpray device for the appropriate pressure range of **1.5-2.0 bars** (21.5-28.5 psi, **green range**). Adjust pressure setting by turning the black pressure control knob.

Instructions for Scrub Nurse | Spray Set



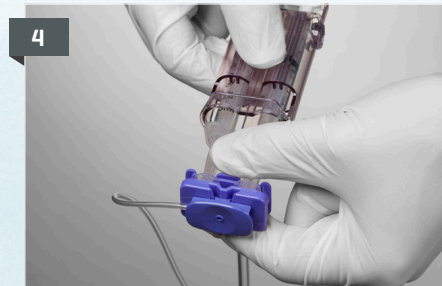
Prepare COSEAL Surgical Sealant according to the instructions in the package insert.



Firmly attach the spray head to the hubs of the syringes, ensuring the clips lock on both sides.



Fit the connection tube of the spray set to the luer-lock connector on the underside of the spray head.



Remove the standard plunger clip on the COSEAL unit and attach the spray set clip by sliding it onto the syringe plungers.



There are two rows of slots on the clip. The first row is for the 4 mL and 8 mL kits, and the second row is for the 2 mL kits.



Pass the assembled COSEAL unit to the surgeon for spray application.

Instructions for Surgeon



Spray from a distance of 10-15 cm for optimum results.

For a distance of less than 10 cm, the pressure must be adjusted accordingly. Avoid spraying from a distance of less than 5 cm.

See table below for adjustment settings.

Distance	5cm	10cm	15cm
Pressure	1 bar / 15 psi	1.5bar / 22 psi	2 bar / 29 psi



To activate the flow of gas, cover the opening in the clip center with thumb. To begin application, gently depress the syringe plunger.

- The EASYSpray Regulator will continue to emit gas for a brief period after the thumb is removed from the clip/plunger. This delay helps to avoid clogging of the spray head.
- Allow at least 60 seconds after application, and before touching or laying any object on top of the COSEAL.



Coseal is indicated for:

- Sealing suture lines along arterial and venous reconstructions.
- Enforcement of suture and staple lines in lung resection procedures.
- Patients undergoing cardiac surgery to prevent or reduce the incidence, severity and extent of post surgical adhesion formation.
- Patients undergoing laparotomy or laparoscopic abdomino-pelvic surgery as an adjunct to good surgical technique intended to reduce the incidence, severity and extent of post surgical adhesion formation.

CONTRAINDICATIONS

Do not use Coseal as a bronchial stump sealant, during bronchial sleeve resections, or for sealing decorticated lung areas.

Do not use Coseal in procedures in which pleural adhesions are desired.

WARNINGS

Application involving the use of pressurized gas may be associated with potential risks of air embolism, tissue rupture, or gas entrapment with compression, that may be life-threatening. To minimize these risks control the maximum pressure as indicated in the applicator instructions for use.

Do not inject Coseal into vessels.

Do not use in place of sutures, staples or mechanical closure.

To prevent any compressive effects, in compression-sensitive cavities or in patients with an increased risk of compression (e.g. neonatal cardiac procedures), application of a thin layer of product is recommended (1 mL per 10 cm²).

Do not use Coseal in contaminated or “dirty” pulmonary resection cases.

Coseal swells up to four times its volume within 24 hours of application and additional swelling occurs as the gel resorbs. Therefore, surgeons should consider the maximum swell volume and its possible effect on surrounding anatomic structures potentially sensitive to compression.

For safe and proper use of this device, please refer to full device Instructions for Use.

ITEM NUMBER	PRODUCT DESCRIPTION
934073	COSEAL Surgical Sealant, 2 mL
934074	COSEAL Surgical Sealant, 4 mL
934075	COSEAL Surgical Sealant, 8 mL
1504720	EASYSPRAY Pressure Regulator
0600021	COSEAL Spray Set, 10 pack

For questions or ordering information, please contact your Baxter representative

Advancing the art of healing

PRECAUTIONS

To apply Coseal for adhesion prevention, use the Coseal Spray Set or other Coseal-compatible spray device. Hold the spray set 5-10 cm from the site to provide a uniform layer to the treatment site.

Always apply a thin, continuous layer of Coseal on large surfaces or in compression-sensitive areas using spray application. The application of excess product can be avoided by applying a minimal amount of Coseal to achieve proper sealing. A thin layer can be achieved by spraying a thickness of approximately 1 mm of product (1 mL per 10 cm²).

EASYSPRAY Regulator Important Risk Information

Caution: Pressurized gas supply must be between 3.5 and 7 bar (51-100 psi).

Caution: DO NOT connect to an oxygen source. Failure to follow these instructions can lead to explosion, which could result in serious injury or death.

Prior to operation make sure that the pressure range of the device is adjusted to the range specified in the appropriate spray set instructions for use.

Caution: Any application of pressurized gas may be associated with a potential risk of air embolism, tissue rupture or gas entrapment with compression, which may be life threatening. Be sure to take appropriate measures to address these risks by observing the recommended minimum spraying distance and the maximum pressure provided in the appropriate spray set instructions for use.

Caution: Spraying into enclosed body cavities requires appropriate safety measures to make sure that the above mentioned risks will be avoided.

NOTE: Do not use with rechargeable batteries. The use of accessories of other manufacturers is not permitted.

